



# LNO




**LEVIGATRICE PER BORDIA NASTRO OSCILLANTE  
KANTENSCHLEIFMASCHINE MIT BAND OSZILATION  
EDGE SANDING MACHINE WITH OSCILLATING BELT  
PONCEUSE DE CHANTS À BANDE OSCILLANTE  
LIJADORA DE CONTORNOS CON BANDA OSCILLANTE**


• Le misure ed i pesi sono approssimativi. La Dittra si riserva di apportare migliorie e modifiche senza alcun preavviso. • Abmessungen und Gewichte können ohne vorherige Ankündigung geändert werden. • Weight and dimensions of machines, as well as performances, can be changed or modified at any time without notice.  
 • Les dimensions et les poids sont approximatifs. La Maison peut apporter des améliorations et des modifications sans aucun préavis. • Las Medidas y pesos sono aproximados. La empresa se reserva el derecho de modificarlas sin previo aviso.

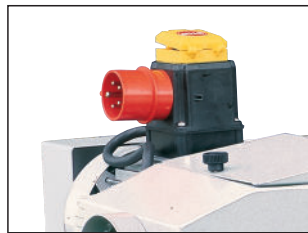
|   |                              |               |
|---|------------------------------|---------------|
|  | <b>DATI TECNICI</b>          | <b>LNO 90</b> |
|   | Motore trifase HP/KW         | 2,5 (1,8)     |
|   | Velocità nastro m/sec        | 14            |
|   | Lunghezza utile di lavoro mm | 860           |
|   | Larghezza nastro mm          | 150           |
|   | Sviluppo nastro mm           | 2400          |
|   | Dimensioni piano mm          | 730X300       |
|   | Inclinazione nastro          | 0÷90°         |
|   | Peso netto Kg                | 160           |

|   |                           |               |
|---|---------------------------|---------------|
|  | <b>TECHNISCHE DATEN</b>   | <b>LNO 90</b> |
|   | E - Motor 380 V PS/KW     | 2,5 (1,8)     |
|   | Bandgeschwindigkeit m/Sek | 14            |
|   | Arbeitslänge mm           | 860           |
|   | Bandbreite mm             | 150           |
|   | Bandlänge mm              | 2400          |
|   | Tischgröße mm             | 730X300       |
|   | Schleifeinheit Schwenkbar | 0÷90°         |
|   | Netto Gewicht Kg          | 160           |

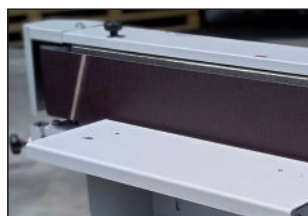
|   |                         |               |
|---|-------------------------|---------------|
|  | <b>TECHNICAL DATA</b>   | <b>LNO 90</b> |
|   | Three-phase motor HP/KW | 2,5 (1,8)     |
|   | Belt speed m/sec        | 14            |
|   | Working length mm       | 860           |
|   | Width of the belt mm    | 150           |
|   | Length of the belt mm   | 2400          |
|   | Table dimensions mm     | 730X300       |
|   | Blade tilting           | 0÷90°         |
|   | Net weight Kg           | 160           |

|   |                           |               |
|---|---------------------------|---------------|
|  | <b>DONNÉES TECHNIQUES</b> | <b>LNO 90</b> |
|   | Moteur triphase CV/KW     | 2,5 (1,8)     |
|   | Vitesse de la bande m/sec | 14            |
|   | Longueur de travail mm    | 860           |
|   | Largeur de la bande mm    | 150           |
|   | Longueur de la bande mm   | 2400          |
|   | Dimensions table mm       | 730X300       |
|   | Inclinaison du ruban      | 0÷90°         |
|   | Poids net Kg              | 160           |

|   |                              |               |
|---|------------------------------|---------------|
|  | <b>DATOS TECNICOS</b>        | <b>LNO 90</b> |
|   | Motore trifásico HP/KW       | 2,5 (1,8)     |
|   | Velocidad de la banda m/seg  | 14            |
|   | Longitud. mesa de trabajo mm | 860           |
|   | Anchura banda lijado mm      | 150           |
|   | Longitud. banda lijado mm    | 2400          |
|   | Medidas mesa mm              | 730X300       |
|   | Inclinación de la banda      | 0÷90°         |
|   | Peso neto Kg                 | 160           |

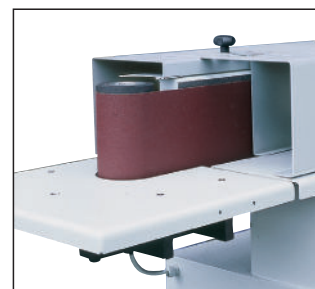
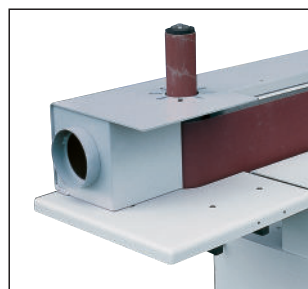


- Impianto elettrico a norme CEE
- Elektrische Anlage nach CE - Vorschrift
- Electric installation according to CE
- Installation électrique selon normes CE
- Instalación eléctrica según reglas CE



- Piano Nastro inclinabile 0°-90°
- Schleifbandtisch neigbar 0°-90°
- Sanding belt table tiltable 0°-90°
- Surface de bande abrasive inclinable de 0°-90°
- Cinturón basculante 0°-90°

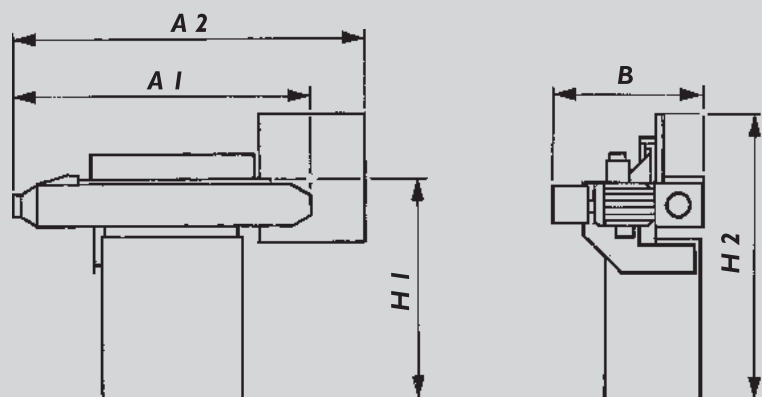
**• A RICHIESTA • ZUBEHÖR • OPTIONALS •  
• OPTIONS • PRINCIPALES OPCIONALES •**



- Gruppo di levigatura pezzi curvi (Dimensioni piano posteriore mm. 420x400)
- Kurvenstückschleifanschlag (Zusatzschlößgröße mm. 420x400)
- Sanding unit for curve pieces (Additional table dim. mm. 420x400)
- Groupe de polissage pièces courbés (Dimensions table adjointe mm. 420x400)
- Grupo de lijadura para piezas curvas (Medidas mesa adjunta mm. 420x400)



- Goniometro per levigature angolate
- Winkelschleifanschlag
- Little fence for angled sanding working
- Equerre pour polissages anguleux
- Escuadra para hacer lijaduras angulares



|    |               |
|----|---------------|
|    | <b>LNO 90</b> |
|    | mm            |
| A1 | 1280          |
| A2 | 1480          |
| B  | 680           |
| H1 | 960           |
| H2 | 1250          |